



USER MANUAL

Terran Roof Tiling solution

TERRAN
OTTHON A JÖVŐBEN

Program and library development:

ÉPTÁR Kft.

1145 Budapest Szugló u. 61-63. tel.: (1) 225-7355
fax: (1) 225-7356 információ: info@eptar.hu
<http://www.eptar.hu>



Terran Roof Tiling (Archicad 23/24/25/26/27) User Guide

The Terran Roof Tiling (Archicad 23/27) user manual is fully protected by publishing and copyright (Copyright ©2017 ÉPTÁR Kft.). Copying, extracting or translating all or parts of a document into another language without the written permission of the rightholder is prohibited. First edition.

Terran Roof Tiling (Archicad 23/24/25/26/27) program

The Terran Roof Tiling (Archicad 23/27) program is fully protected by copyright (Copyright ©2024 ÉPTÁR Kft.). Modification or translation into another language of the program and its GDL elements is prohibited without the written permission of the rightholder.

Trademarks:

Archicad® is a registered trademark of Graphisoft®, GDL is a trademark of Graphisoft®.

Content

1. Chapter: Installing and starting the program	4
1.1 Install the Terran program	4
1.2 Launch of the Terran program	4
1.3 General structure of the Terran program	5
1.4 Use of the Terran program on plans made with the Mediterranean program.....	5
2. Chapter: Using the Program	6
2.1 The basics	6
2.2 Tile laying	6
2.3 Laying and handling of GENERON tiles	6
2.4 Features of the Terran program	8
2.5 Assign accessories	10
2.6 Delete accessories	11
2.7 Change or delete roof tiling	11
2.8 Additional properties of elements	13
3. Chapter: Listing	14
3.1 List Terran items	14
3.2 Introduction to list templates	15
4. Chapter: Using Node Drawings	18
4.1 Insert node drawings	18
4.2 Modify node drawings	18
5. Chapter: Technical assistance and fault reporting.....	21

Chapter 1

1.1 Installing the Terran program

Download the Terran 6.5 roof tiling add-on and start the installer. The installer will automatically copy the necessary files to your computer.

You do not need to uninstall previous versions of Terran before installation, even if you already have a Terran solution installed on your computer.

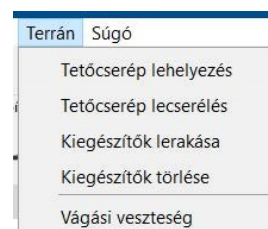
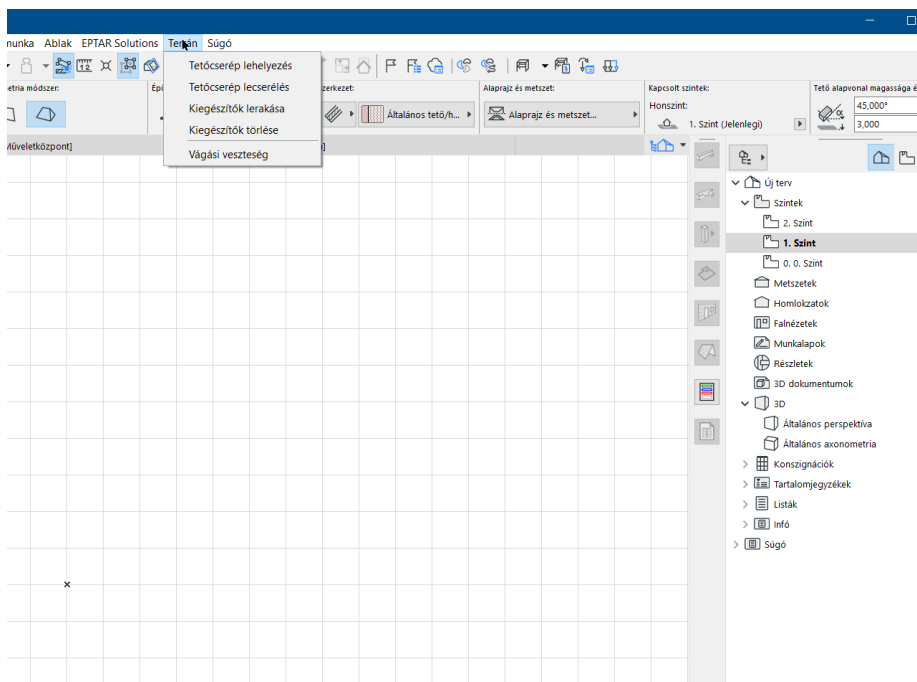
Once installed, the Terran app automatically loads the required libraries the first time you use it.

Note: *this version of Terran can only be used under Archicad 23 - 27!*

If you have previously installed an earlier version of the Mediterranean roof tile, the installer will overwrite it during installation.

1.2 The Terran program

After starting Archicad, a new menu item will appear in the menu bar: "Terran".



From its submenus we can access the various functions.

1.3 General structure of the Terran add-on

The Terran Roof Tiling consists of two parts: the additional program running under ArchiCAD (Terran API) and the library (TerranTmp.lib).

The program places the polygons corresponding to the different roof surfaces above the ArchiCAD roofs on the floor plan. Additional elements (e.g. snow traps, antenna outlets, roof hatches, etc.) can be placed on these surfaces. Tiles appear as textures on polygons. Additional elements are visible both in the floor plan and in 3D view. Ridge tiles appear schematically in space. The TerranTmp.lib directory contains files for textures, listing, and more.

The library items corresponding to tile and spine elements are stored in the Terran/TerranTmp.lib directory in the Add-ons folder after installation. (This library is loaded automatically.) These are parameterized on the floor plan by the Terran API.

1.4 Use of the Terran program, built on plans under the previous Mediterranean program

If you have previously installed an earlier version of the Mediterranean roof tiling, the installer will overwrite it during installation.

If you want to open a previously created design that includes roof surfaces created with the previous Mediterranean roof tiles, the program does not automatically find the tile surfaces. This is because the TerranTmp.lib library is loaded only when tiling begins.

If you select a roof surface and use the Terran/ Roof tiling command, the library will automatically load and display old roof surfaces, even if you do not finish tiling and click Cancel in the dialog.

Chapter 2

2.1 The basics

In the Archicad plan, polygons imitating tile surfaces are placed on roofs on the same level. After the parameterized library elements have been laid, the roof and tile surface polygon are grouped together, of course this group can be suspended or dismantled using the relevant commands on the Tools menu. In addition, there is no automatic connection between the roof and the deposited library item! Thus, the modification of the roof (changing its angle of inclination, thickness, etc.) is not followed by the laid tile surface element. In case of moving, mirroring or rotating the roof, the polygon follows the roof only if group management has not been suspended. Wiping the roof does not affect the tiled polygon.

Important! The Terran program should be used when the roof is already in its "final state", i.e. other structures connected to it (e.g. chimneys, skylights, etc.) have been placed.

Before using the Terran program, you need to create the necessary roof elements in Archicad using the Roof tool and combine them with each other. The Terran program works with a tolerance of a few cm, so minor inaccuracies can be filtered out. After the roofs are ready, the Terran program can be applied. It consists in roof tiles and assigning accessories.

The program deals only with simultaneously selected roof, wall and fill type elements. After geometric analysis of these, it places the necessary library elements. During the analysis, it determines the relationship of roofs, walls and fillings to each other. This tells you where you need to lay ridges, which section of the contour line of the roofs will be the eaves, the groove, where edging tiles can be placed, etc. Wall and chimney edging is made on the edges or sections of walls and fillings common with the roof.

2.2 Place tiles

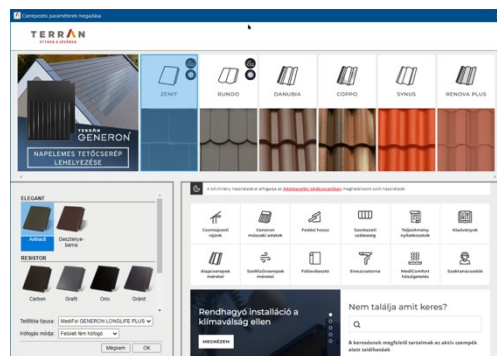
After selecting the roof, wall and fill type elements forming a roof structure together, we define the **properties of the tiling in the setting window of the "Roof tile laying"** menu item in the Terran menu. This interface has been significantly revamped.

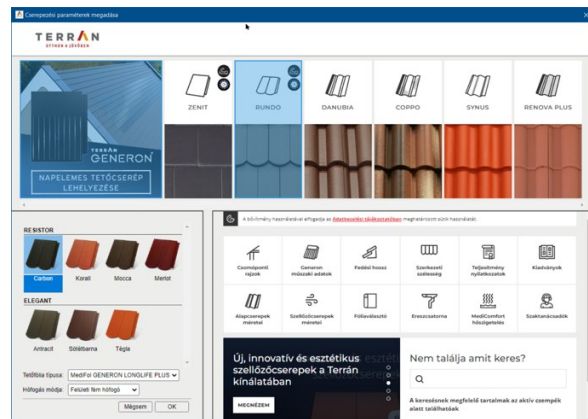
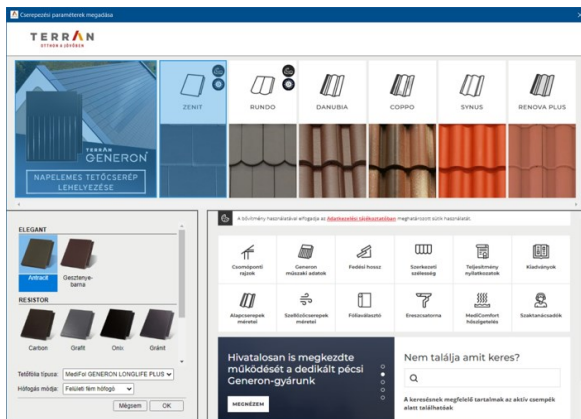
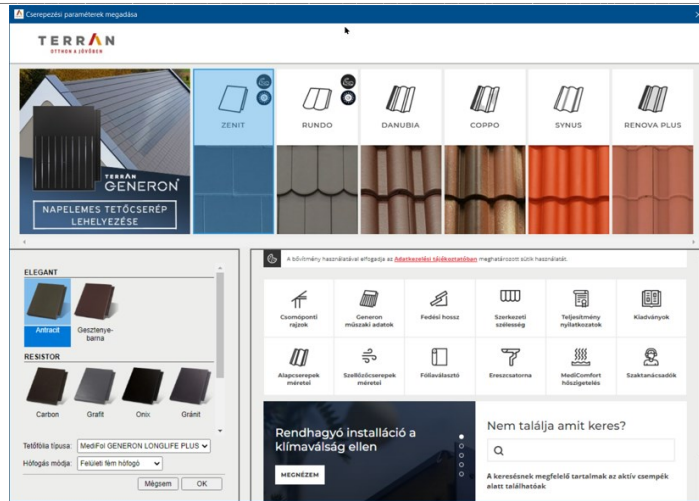
By selecting the tile type and color, the program automatically determines the shape and color of the cone tile, the color of additional elements and structures.

2.3 Laying GENERON tiles

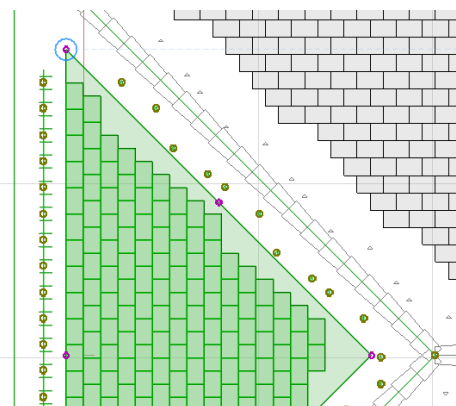
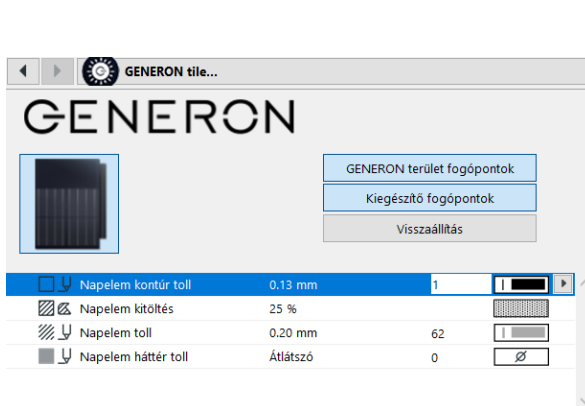
GENERON tile placement: the program treats GENERON tiles as an option, i.e. they can be switched on when ZENIT or RUNDO tiles are placed on roof surfaces. It is not applicable to other types of tiles, the GENERON option is not available in the program when selecting these tiles.

The GENERON option can be activated by clicking on the "GENERON" image in the upper left corner of the interface.



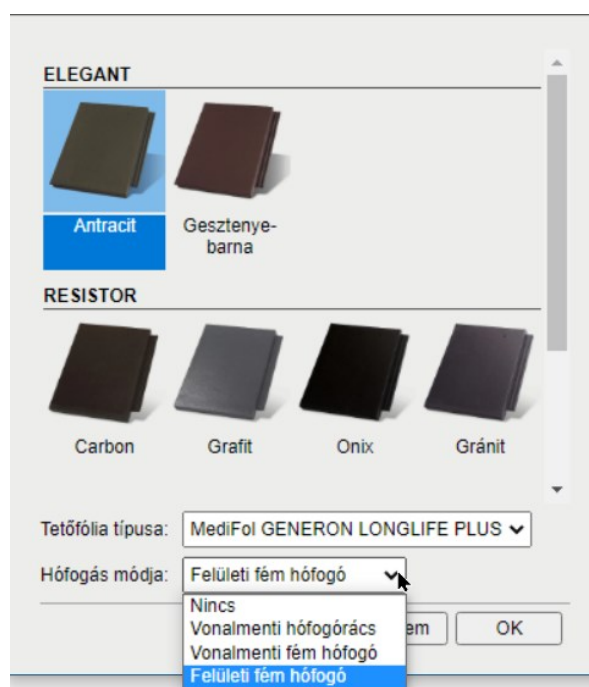
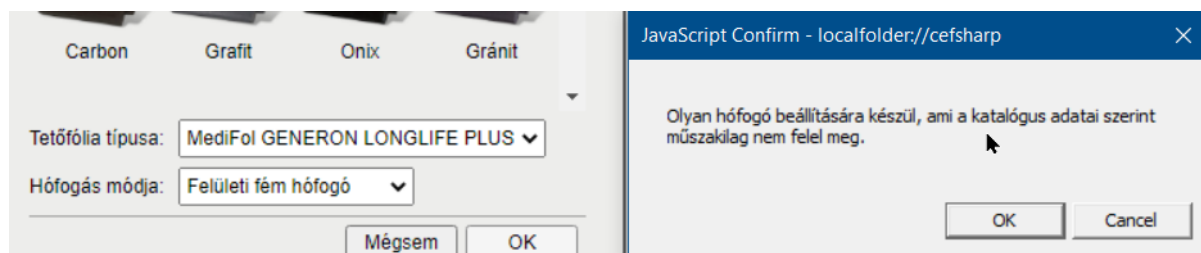


When placing GENERON tiles, solar panels will be placed on the roof surface in accordance with GENERON regulations. Of course, the program puts the photovoltaic elements on the largest usable surface, but this surface can be modified afterwards. To do this, the tile GDL element placed on the roof surface must be selected, then open the Subject adjustment window, activate the "GENERON area grips" switch on the GENERON tab, and then click OK to display the polygon for the maximum GENERON determined by the addon on the roof surface. The corner points of the polygon are marked in red, and by grabbing them, you can change the shape and size of the area. When the change is complete, you can turn off change points on the settings tab mentioned above. On the same settings page, you can use the "Reset" switch to restore the area originally calculated by the addon.



A novelty in the new version of the program is the choice of roof film and snow trap. The designer can choose which Terran roof film and what type of snow catch (surface or line metal snow trap or snow trap grid) he wants to apply to the given roof.

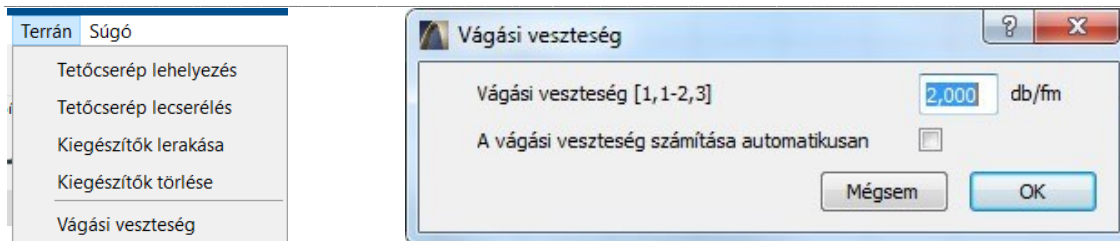
Snow catching for GENERON: according to the technical specifications, only lineside snow trap grids can be used for GENERON tiles. If you do not select it when you place it, the program will warn you about this, but will not prohibit the use of other snow traps.



The selected snow trap type will automatically appear on the tile surface with the appropriate layout. The amount of snow catchers and foil in the Terran list appears naturally.

In the first step, the amount of base tiles to be placed on the roof is determined on the basis of the maximum slats spacing valid for the given roof inclination. If the construction is carried out with a smaller spacing than this, we must take it into account in the amount of base tiles (inverse proportionality). On buildings with complex roof geometry, the real basic tile requirement differs from the demand calculated on the basis of the surface. Due to the necessarily formed cut tiles along the edges, there is an additional demand for the base tile compared to the amount calculated on the basis of the surface.

This additional requirement shows a nearly linear relationship with the length of the cutting edges (edge, edge ridge, etc.), therefore the most accurate estimate of the base tile surplus can be based on the length of the edges. The setting of the cutting loss value **can be set in the window that appears after the "Cut loss" command under the "Terran" menu item**. The default value is 2.0 pcs / meter / side (both sides are calculated for vape and edge, so there it is actually 4 pcs / meter). The user may deviate from the set default value within the specified limits (1.1 – 2.3).



Depending on the type of tile, the program determines the amount of different additional tiles (edging, half-saddle, ventilation tiles, etc.). Half-tiles are not counted. In the setup window, after selecting the tile, clicking OK, the program will dump the necessary elements.

The foil and pen of the elements to be placed are also determined here in Archicad.

The amount of base tiles placed on the roof is indicated at the base value, which must be increased if necessary depending on the geometric design of the roof structure. Depending on the type of tile and the chosen snow catching method, the program determines the amount of different additional tiles (ventilation, snow trap, etc.). Half-tiles are not accounted for, and cutting losses are calculated based on the surface area and geometry of the roof. After selecting the tile in the adjustment window, clicking OK will perform an analysis of the roof and an edge alignment element will be placed on the surface.

Roof edge inspection and adjustment

The edges of the roof are determined automatically. For more complex roofs, the add-on may use the algorithm to specify the wrong edge type for certain roof sections. Therefore, the Terran roof tiling solution has been extended with a new step compared to the previous ones, so that the edges of the roofs can be adjusted precisely and easily if required, and the designer can correct the incorrectly entered edge.

Important! After adjusting the tiles, the roof tiler places an edge-adjusting GDL element on the roof. This item appears on the design only temporarily, disappearing after finalizing the tiling. Please do not move or place this element on another foil, otherwise the roof tile add-on will not work.

When the edge alignment element appears, an icon appears on each edge of the roof to show the type of edge set for each roof edge.

If the automatically set edge types are good or you don't want to adjust the edges, press the "**Finalize tiling**" button in the dialog.

If the edge types are not correct and you want to change them, you can do so in two ways.

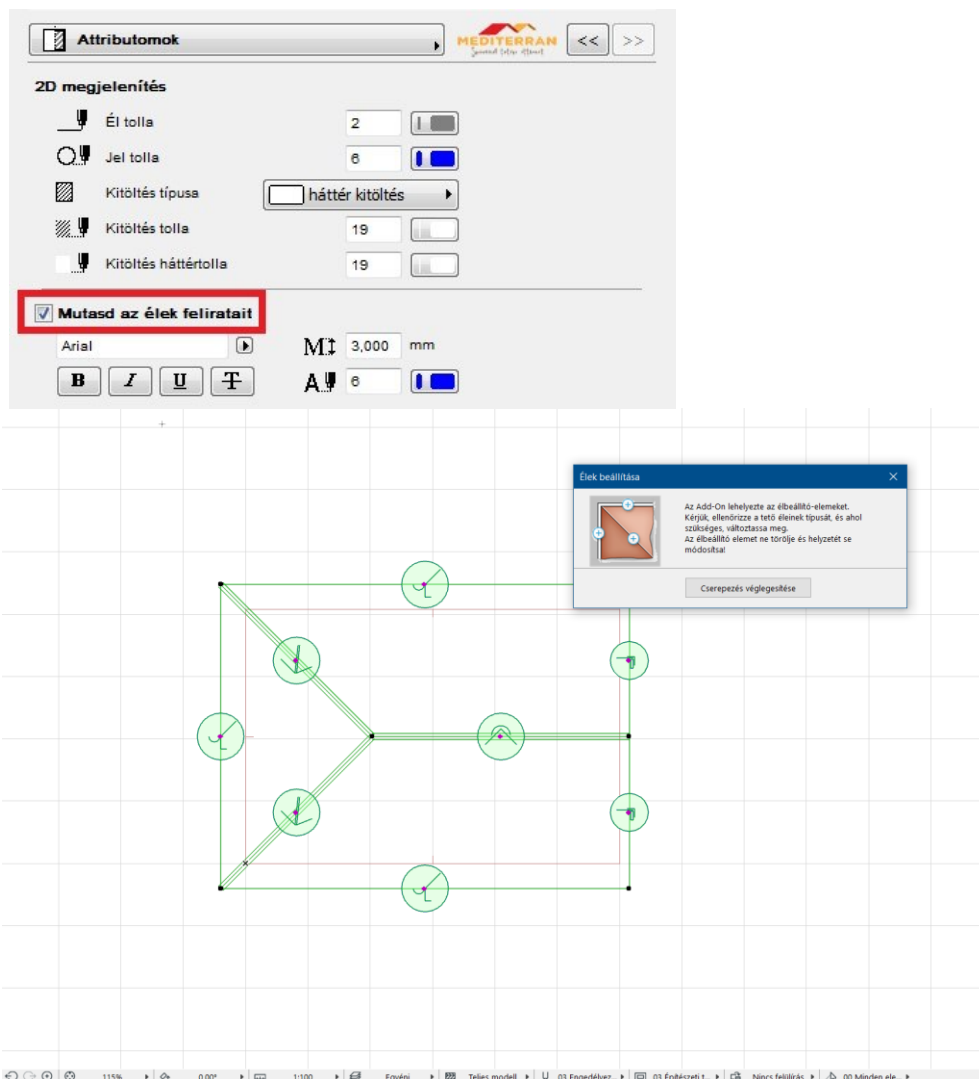
1) Set edge type on floor plan:

Grasp the purple handle in the center of the icon and move it upwards. You'll see the edge types you can set for that edge, find the type that suits you, and drag the purple handle.

To move purple handles, always use the "Move Node" function in the floating palette. Edge separator icons appear when you move the handle up.

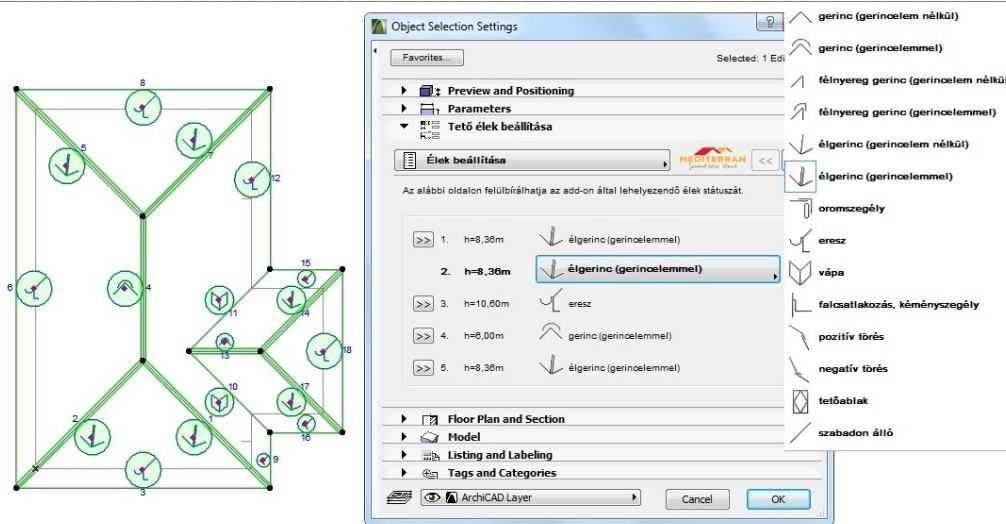


The edge-type icon originally assigned by the add-on is always placed above the circular icon. If you want to restore the original edge type but can't remember which one it was, drag the handle onto this icon.















2) To set an edge type in the Set Subject dialog box:

Open the "Set Subject" window in the Info pane or by pressing Ctrl+T, then on the "Attributes" page of the Set Roof Edges tab, turn on the "Show edge labels" switch. This will turn on the numbering of edges on the object. Then, on the "Set edges" page, adjust the edges in the list with the appropriate sequence numbers according to the numbering.

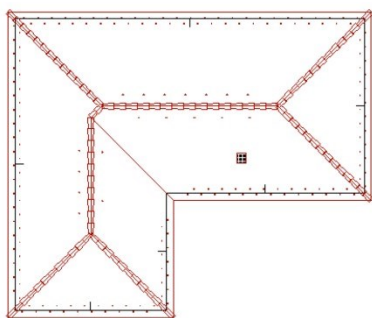


The edges can be as follows:

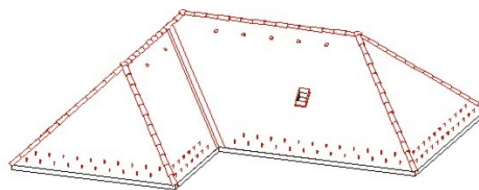
-  spine (without vertebral element)
-  spine (with vertebral element)
-  ridge (with spinal element) half-saddle
-  ridge (without vertebral element)
-  edge ridge (without vertebral element)
-  edge ridge (with vertebral element)
-  gable edging

-  eaves vape
-  wall connection chimney
-  edging positive fracture
-  negative fracture skylight
-  freestanding

You can choose any of the above two options to adjust the edges. When you are done with the settings, press the "Finalize tiling" button, the program will place the necessary elements:

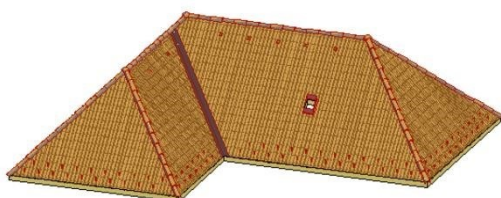


alaprjz



3D takartvonalas ábra

3D színezett ábra



rendering



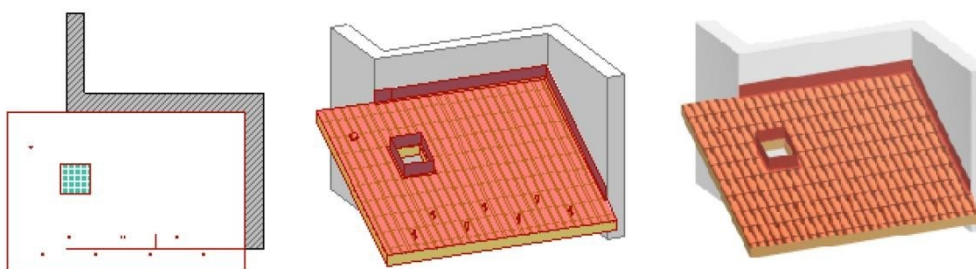
2.4 Features of the Terran 6.5 program

1. Vape solutions:

- Vapes appear in 3D and in the list in a color that harmonizes with the tile color, and the amount of tiles they "occupy" is deducted.

2. Management of wall and chimney connections:

If, when laying the tiles, not only the roof is designated, but also the wall(s) or fill(s), and they have a common edge with the roof on the floor plan, the program can treat them as wall or chimney connections. So it is not enough to pierce the roof with the wall of the chimney, but also to pierce the roof in the same place. If the chimney is not made of walls, the filling placed in the same place plays a role.



Important! The program does not examine the relationship between walls and roofs in space, they only need to have a common edge on a floor plan. Unselected elements are not dealt with during the analysis!

1. To monitor deflection limits:

If you want to place the tile on a roof with an inclination angle below 10 degrees, a (red) strikethrough and a warning text will appear on the floor plan sign. However, in all other cases (3D, listing), the tiles appear. This feature draws the designer's attention to the need to increase the angle of inclination of the roof.



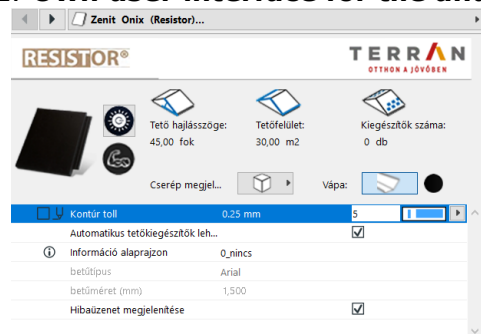
floor plan

Depending on the angle of inclination of the roof and other conditions, underlay or underlay insulation must be installed under the tile shelling. Detailed specifications for underlay covering, underlay insulation and its subfloor are contained in the current Terran® Application Guide. If we want to place the tile on a roof with an inclination angle more than 6 degrees lower than the prescribed angle of inclination, the designer's attention is warned by a sign (red without crossing-out) that underlay **insulation** must be installed under the shell.

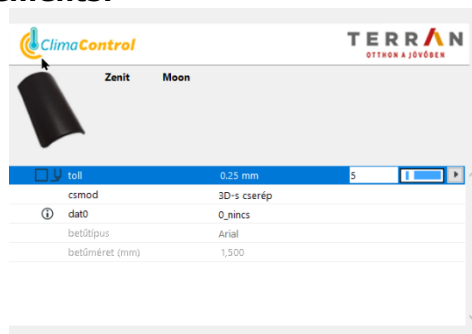
1. Listings:

This version of the program can only list the quantity of products. Listing information is covered in Chapter 3.

2. Own user interface for tile and spine elements:



tile element



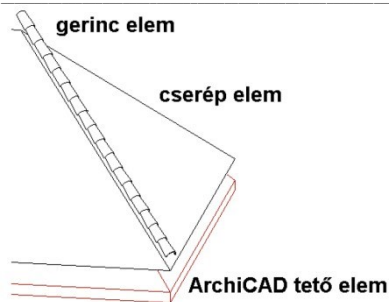
ridge element

The data displayed here are partly for reference only, since e.g. to set the type and color of tiles you need to use the "Terran" menu item, but some things can be set individually. (E.g. laying of valley or accessories, use of 3D tiles, floor plan information, etc.)

2.5 Assign accessories

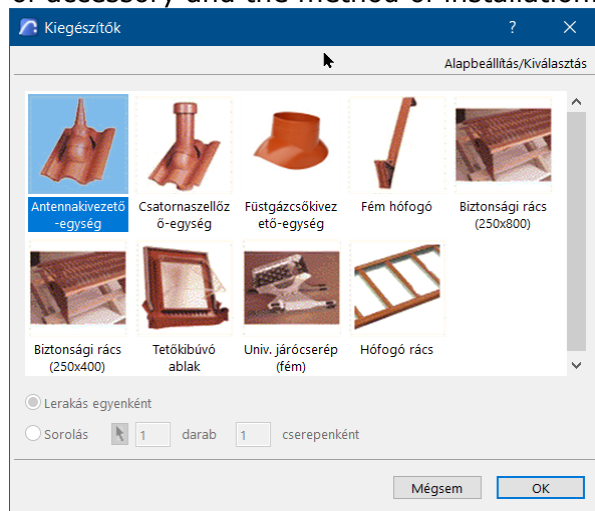
Some of the accessories are automatically assigned to the roof surface depending on the geometry of the surface. These can include ventilation tiles and metal snow traps. Their amount depends on the type of tile.

However, there are accessories that can be ordered for the tile element according to the user's needs. For example, antenna outlet, duct vent, metal snow trap, roof hatch, etc. can be specified individually.



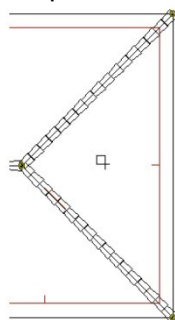
To determine them, it is necessary to designate a tile surface element. (If you select more than one of these items, you will receive an error or nothing will happen. You'll also see a message if you haven't selected a tile item.)

In the "Terrain" menu window of the **"Add accessories"** menu window, specify the type of accessory and the method of installation.

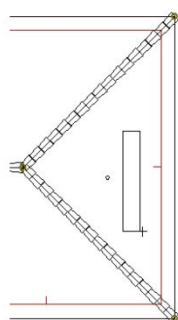


If you place individually, you can use the mouse to place the item on the selected tile surface after closing the dialog box.

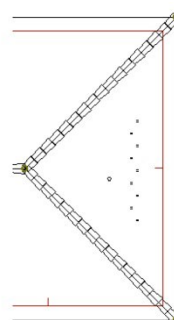
When sorting, you can specify the exact number of pieces if the "arrow" button is not pressed. The density of the elements to be laid can also be determined per tile. We also have the option of laying down like a chessboard.



Custom placement
(e.g. antenna outlet)



sorting
(e.g. metal snow trap)

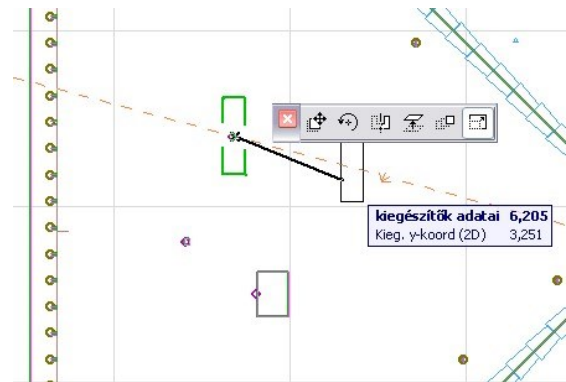


Items laid

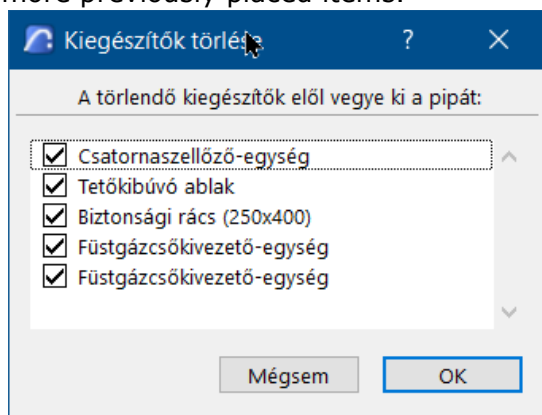
With this method, additional elements can be assigned to several tile surfaces in a row. All additional elements appear on the floor plan, schematically in 3D and, of course, when listing.

2.6 Change or delete accessories

Additional elements placed on roof surfaces can be moved after laying. By selecting the roof surface element, movable handles (green, diamond with holes) appear on the floor plan, which you can click on and select the "stretch" button in the modifying dialog to move the accessory. In the case of additional elements along the line (snow trap, metal snow trap), several grips are displayed, which allows you to change the length of the accessory.



You can also use the Delete Add-ons **menu item in the "Terran" menu** to delete one or more previously placed items.



Turning off the check mark in front of the items deletes these items when you close the window. So, the check mark should be in front of the remaining elements.

2.7 Change or delete tile covering

When laying tile surfaces, the solution groups them to the Archicad roof elements. This is a great help if you want to move, rotate or raise the roof. However, it can cause problems when changing the pattern of tile covering or erasing the covering.

Erasing roof elements:

To be able to erase the tile covering without erasing the roof element, you need to eliminate or suspend the grouping.

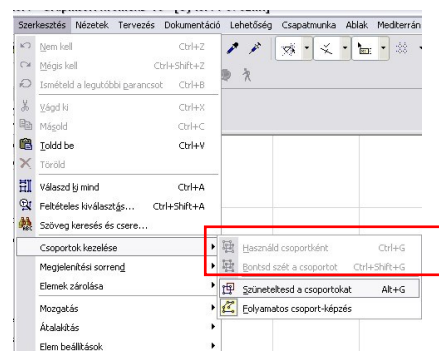
To ungroup, select the roof surface and issue the command "Edit / Manage groups / Ungroup group". To pause grouping, use the command "Edit / Manage groups / Pause groups".

To delete the base tiles for each roof surface, select the roof tile element and delete it using the "Edit / Delete" command.

To wipe ridge tiles, select the ridge tile and wipe it.

Comment:

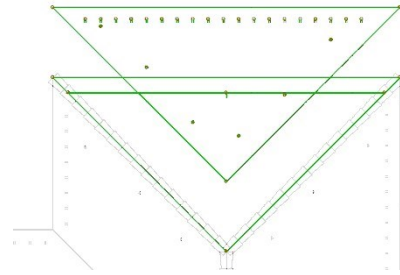
Deleting field tiles also deletes add-ons for that interface, which should be taken into account during the listing process. The elements to be erased in this



case are: the roof foil, the vat element in half the length of the vape, snow catchers, eaves ventilation element, vapor dropper plate, ventilation tape.

To change field tiles:

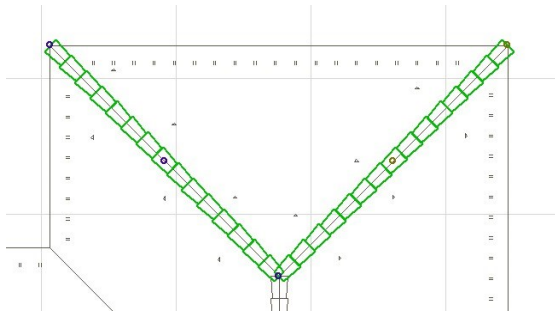
To change field tiles, you must also turn off the "group" command (see above). However, to make changes, you must select both the roof element and the field tile element (mediterranean_cserep) on the floor plan. After selecting both the roof surface to be modified and the field tile element located on it, start the command "Terrain / Roof tile replacement". Select the type of new tiling and press the OK button. The application automatically deletes the field tile element and places the new one.



WARNING: If you do not select the field tile element before you make the change, the new field tile element is not deleted and the new field tile element is placed on top of the existing element. This can mean mixing the two textures in a visual design, and doubling the number of tiles on a given surface in a statement.

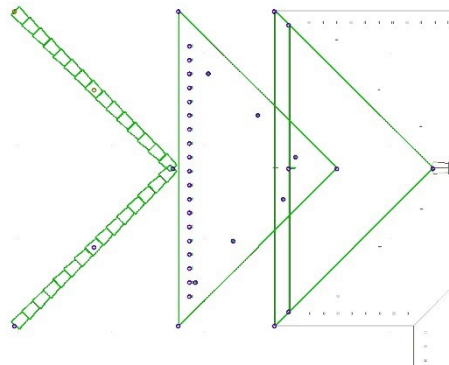
We recommend that you delete the old field tile before modifying the field tile.

Modification of ridge tile elements:



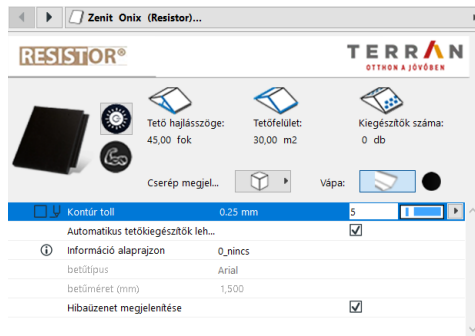
Turn off the "grouping" command (see above). Select the wedge-like or ridge element you want to change, launch "Terrain/Roof tile Replacement", then select the new tile color and type. The solution automatically deletes the old item and places the new one.

If you want to modify both field tiles and cone tiles, select the field tile, its roof surface and cone tiles, then select the new color in the menu item "Terrain / Roof tile replacement".

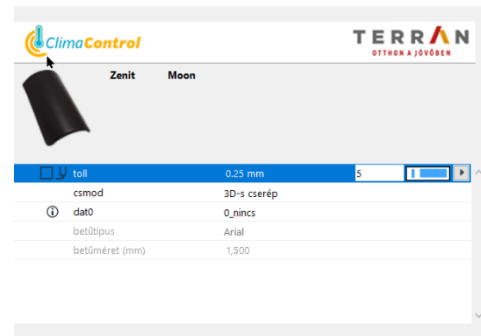


2.8 Additional properties of elements

The placed library elements, due to their parameters, have some other useful properties. We can view the data of the product assigned to the tile surface or ridge. (Data such as colour, tile type, etc. cannot be changed in the user interface, but only with the help of the Terran Roof Tiling Program as described in point 2.6!)

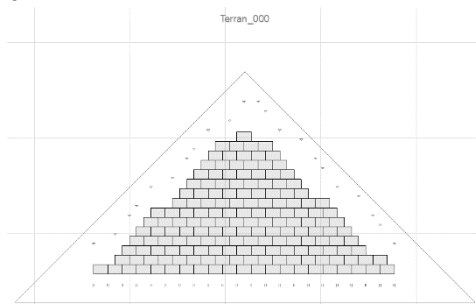


Parameters of the tile element



Parameters of the ridge tile element

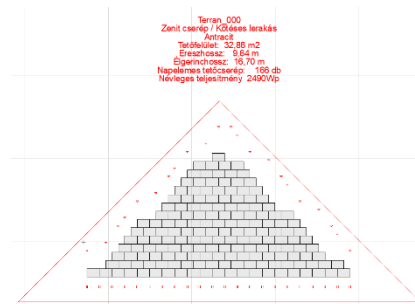
You can also use the "floor plan information" parameter to display some data on the floor plan:



„1_only ID”



„1_ID only”



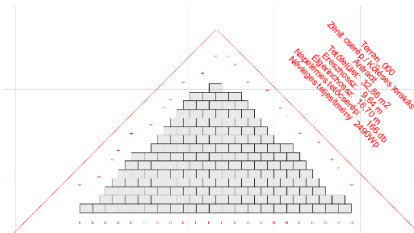
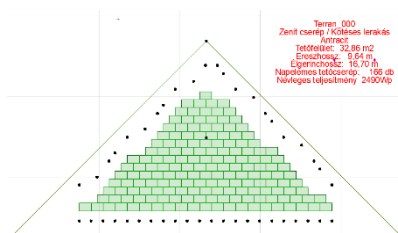
„2_detailed”



„2_detailed”

This information can help us identify surfaces on reports. (see Chapter 3)

Also associated with this parameter is the ability to adjust the font and font size. The text displayed is automatically positioned, but you can change it by moving or rotating the text box.



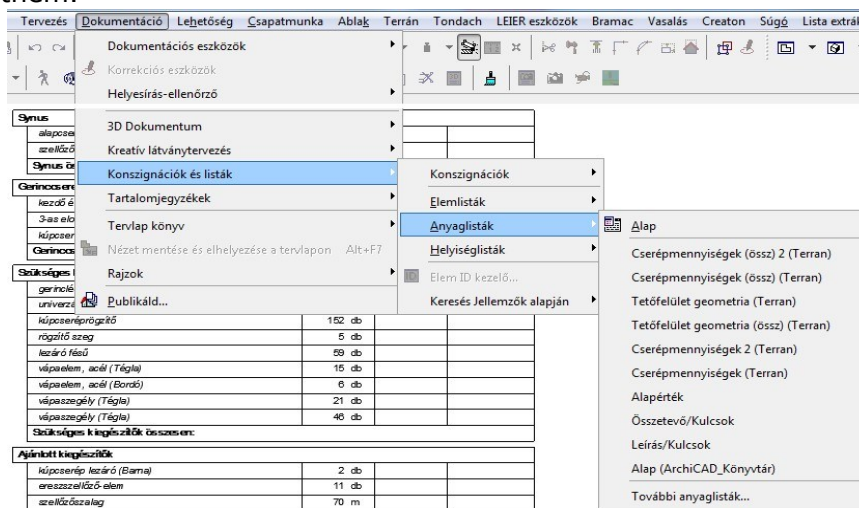
In addition, we can change the floor plan pen of the laid elements (see Chapter 2.2) and the floor plan filling of the tile element.

3. chapter

3.1 List Terran items

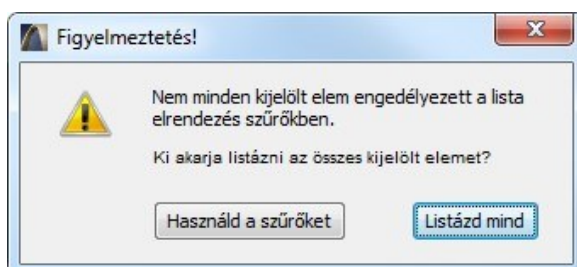
We can make a statement of the laid tile and ridge elements. The amount of tiles is determined depending on the type of tile, the covering method and the angle of inclination. Accessory elements and spine tiles are listed with their actual number.

If you load the TerranTmp.lib library (which the API does automatically), you can choose between two fundamentally different detailed reports, as well as an aggregated version of them.



Terran items are listed as components.

Important! Listing automatically filters what can be listed. If you select items to narrow the PivotTable list, the items you selected might include items that don't meet the listing criteria. In this case, a warning window will appear:



We recommend using the "Use filters" button.

3.2 Introduction to list templates

The following are the main features of listing options.

Tile Detection and **Tile Detection 2*:**

In the list we get a list of laid tiles per roof surface. Interfaces are isolated by listing ID (user ID). Therefore, we do not recommend changing this in the library item configuration window!

Terrán cserepek kimutatása

(Árjegyzék dátuma: 2013. február 1.)



1. oldal

2014.08.29.

Szemmel tetőzi otthonát

információs vonal: (69) 569-950 - fax: (69) 569-953 - <http://www.mediterran.hu> - e-mail: vevoszolg@mediterran.hu

	menny.	egységár	összesen
Mediterran_000			
Mediterrán COPPO			
<i>alapcserep (ferrara)</i>	440 db	309 Ft	135 960 Ft
<i>szellőzőcserep (ferrara)*</i>	20 db	1 290 Ft	25 155 Ft
Szükséges kiegészítők			
<i>Lezáró fésű</i>	14 db	320 Ft	4 480 Ft
<i>Hálóerősítésű tetőfólia*</i>	51 m2	150 Ft	7 650 Ft
Ajánlott kiegészítők			
<i>Fém hófogó (fekete)</i>	27 db	260 Ft	7 020 Ft
Mediterran_000 összesen:			180 265 Ft
Mediterran_001			
Mediterrán COPPO			
<i>alapcserep (ferrara)</i>	193 db	309 Ft	59 637 Ft
<i>szellőzőcserep (ferrara)*</i>	11 db	1 290 Ft	13 545 Ft
Szükséges kiegészítők			
<i>Lezáró fésű</i>	6 db	320 Ft	1 920 Ft
<i>Hálóerősítésű tetőfólia*</i>	23 m2	150 Ft	3 450 Ft
Ajánlott kiegészítők			
<i>Fém hófogó (fekete)</i>	11 db	260 Ft	2 860 Ft
Mediterran_001 összesen:			81 412 Ft
Mediterran_002			
Mediterrán COPPO			
<i>alapcserep (ferrara)</i>	515 db	309 Ft	159 135 Ft
<i>szellőzőcserep (ferrara)*</i>	17 db	1 290 Ft	21 285 Ft
Szükséges kiegészítők			
<i>Lezáró fésű</i>	9 db	320 Ft	2 880 Ft
<i>Hálóerősítésű tetőfólia*</i>	60 m2	150 Ft	9 000 Ft
Ajánlott kiegészítők			
<i>Fém hófogó (fekete)</i>	18 db	260 Ft	4 680 Ft
Mediterran_002 összesen:			196 980 Ft
Mediterran_003			
Mediterrán COPPO			
<i>alapcserep (ferrara)</i>	264 db	309 Ft	81 576 Ft
<i>szellőzőcserep (ferrara)*</i>	11 db	1 290 Ft	13 545 Ft
Szükséges kiegészítők			
<i>Lezáró fésű</i>	8 db	320 Ft	2 560 Ft


*** Megjegyzés:**

- A fenti adatok tájékoztató jellegűek, a számolási hibákból eredő károkért felelősséget nem vállalunk!
- 22 foknál kisebb tetőhajlásszög esetén teljes deszkaborítás és páraáteresztő tetőfólia szükséges!
- A szellőzőcserepek optimális mennyisége a kiszellőztetendő szarufaközök számából, vagy az 1 db/10 tető m2-es (Rundonál és Copponál 1,5 db / 10 m2) igény alapján került meghatározásra.
- Igény szerint páraáteresztő fóliával is szállítható, felára (bruttó) 18.000 Ft/ tekercs.

Készült az ArchiCAD program segítségével. © Archidata Kft., 2004

Mediterrán Magyarország Kft. - 7754 Bóly, Tompa M. u. 10.

Tile Statement (total) and Tile Statement (total) 2*:

Terrán cserepek kimutatása (Árjegyzék dátuma: 2013. február 1.)		 TERRAN Sínekkel tetőzi otthonot	
1. oldal		2014.08.29.	
információs vonal: (69) 569-950 - fax: (69) 569-953 - http://www.mediterranean.hu - e-mail: vevozolga@mediterranean.hu			
	menny.	egységár	összesen
Coppo			
alapcserep (Ferrara)	1 097 db	350 Ft	383 950 Ft
szellőzőcserep (Ferrara)	23 db	1 555 Ft	35 765 Ft
Coppo összesen:			419 715 Ft
Gerinccserepek			
kezdő élgerinccserep (Ferrara)	2 db	1 750 Ft	3 500 Ft
3-as elosztó kúpcserep (Ferrara)	1 db	1 750 Ft	1 750 Ft
kúpcserep (Ferrara)	77 db	1 899 Ft	146 223 Ft
Gerinccserepek összesen:			151 473 Ft
Szükséges kiegészítők			
gerinccserep szeg	30 db	235 Ft	7 050 Ft
MediRoll kúpátét-tekerics	28 m	1 990 Ft	55 720 Ft
kúpcserepprögző	77 db	70 Ft	5 390 Ft
rögző szeg	3 db	90 Ft	270 Ft
lezáró fésű	23 db	360 Ft	8 280 Ft
MediFol TEC páraáteresztő tetőfólia (W1)	124 m ²	485 Ft	60 140 Ft
Szükséges kiegészítők összesen:			136 850 Ft
Ajánlott kiegészítők			
szellőzőszalag	23 m	240 Ft	5 520 Ft
fém hófogó (Barna)	45 db	245 Ft	11 025 Ft
páracseppentő ereszlemez	12 db	1 675 Ft	20 100 Ft
Ajánlott kiegészítők összesen:			36 645 Ft
Választott kiegészítők			
műanyag (átvezető) alapcserep - Coppo (Barna)	1 db	4 375 Ft	4 375 Ft
fóliagyűrű	1 db	1 450 Ft	1 450 Ft
gégecső	1 db	3 600 Ft	3 600 Ft
csatormaszellőző-adapter (Barna)	1 db	4 875 Ft	4 875 Ft
Választott kiegészítők összesen:			14 300 Ft
MINDÖSSZESEN:			758 983 Ft (607 186 Ft + ÁFA)
<i>Az árak bruttó listaárak és tartalmazzák az ÁFA összegét!</i>			

In the list we get a consolidated list of laid tiles.

Comment:

List templates marked with * do not display the price value, only an empty field.

The prices in the image may not match the Current Price List prices. In all cases, the application works with the current price list in the year of release of the add-on version.

Roof surface geometry:

In the list, we get the geometric data of the laid surface elements.

Terrán cserepek kimutatása (Árjegyzék dátuma: 2013. február 1.)		 Szeinkkel tetőzi otthonát
1. oldal	2014.08.29.	
információs vonal: (69) 569-950 - fax: (69) 569-953 - http://www.mediterran.hu - e-mail: vevoszolg@mediterran.hu		

Mediterran_000			
hajlásszög:	36,00 fok		
tetőfelület:	44,00 m2		
ereszhossz:	13,53 m		
taréjgerinchossz:	6,37 m		
élgerinchossz:	11,38 m		

Mediterran_001			
hajlásszög:	36,00 fok		
tetőfelület:	19,24 m2		
ereszhossz:	5,38 m		
taréjgerinchossz:	4,16 m		
élgerinchossz:	6,66 m		
vápahossz:	4,72 m		

Mediterran_002			
hajlásszög:	36,00 fok		
tetőfelület:	51,45 m2		
ereszhossz:	8,77 m		
taréjgerinchossz:	2,53 m		
élgerinchossz:	14,01 m		

Roof surface geometry (total):

In the list, the geometric data of the laid surface elements are obtained by aggregate.

Terrán cserepek kimutatása (Árjegyzék dátuma: 2013. február 1.)		 Szeinkkel tetőzi otthonát
1. oldal	2014.08.29.	
információs vonal: (69) 569-950 - fax: (69) 569-953 - http://www.mediterran.hu - e-mail: vevoszolg@mediterran.hu		

tetőfelület:	201,07 m2		
ereszhossz:	61,93 m		
taréjgerinchossz:	12,23 m		
élgerinchossz:	38,76 m		
vápahossz:	8,97 m		

4. fejezet

4.1 Insert node drawings

The node drawings library contains all the node solutions needed for Terran tile covering. The node drawings directory is available online at <http://www.terranteto.hu/szakembereknek/csomoponti-rajzok> page under "Download GDL folder ZIP packaged". You can download the library as a whole or in parts.

Unzip the library and store it in a library on your computer. You can insert individual drawings into your designs using the "File / External Content / Place External Drawing" command.

The drawings appear at the origin, from where you can immediately push them to the right place.

The drawings are optimized for 1:10 scale, If you paste them onto a design sheet with a different scale, you will get the following image.

If you do not want to change the design page to 1:10, see section 4.2 for instructions on how to change the text dimensions to the appropriate size.

In many cases, nodes contain multiple solutions, in which case choose the one that suits you best and delete the rest.



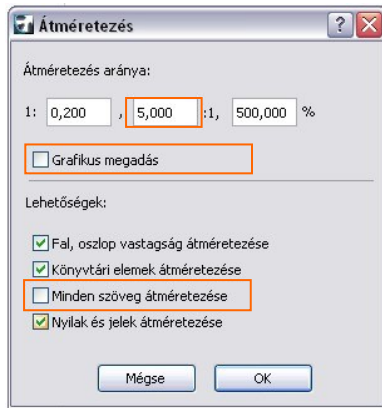
4.2 Modify node drawings

Drawing is displayed in the wrong scale, font sizes are too large/small.

1. Change the scale to 1:10 because your drawings are optimized for 1:10.

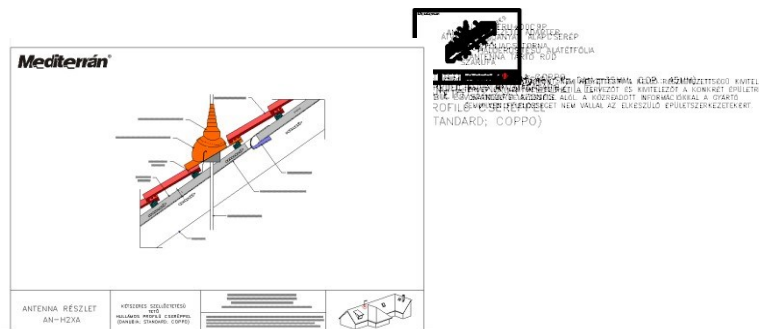


2. If you don't want to change the scale: select each item in the node drawings with the checkbox and select "change / transform / resize". Enter the ratio between the desired scale and 1:10 in the upper part (turn off "Graphic Specification")



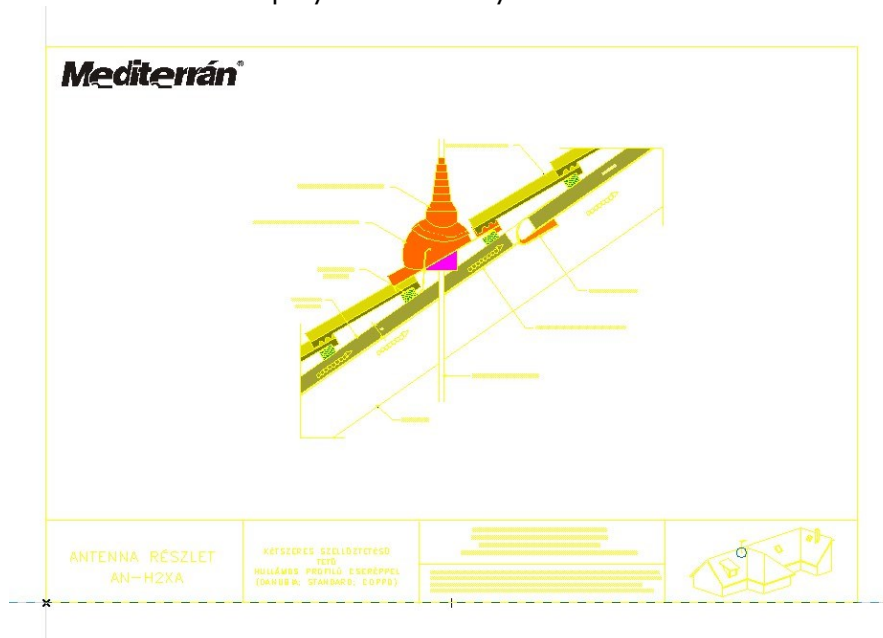
option). You can achieve this on a scale of 1:50 by typing 5 in the second square (desired scale/10).

Warning: to prevent text from resizing, turn off the "Resize all text" checkbox.



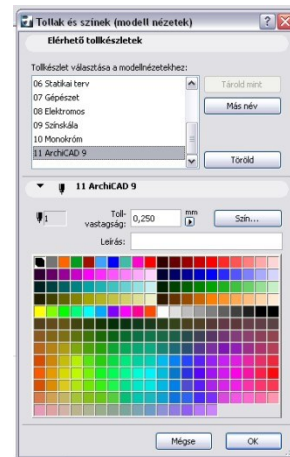
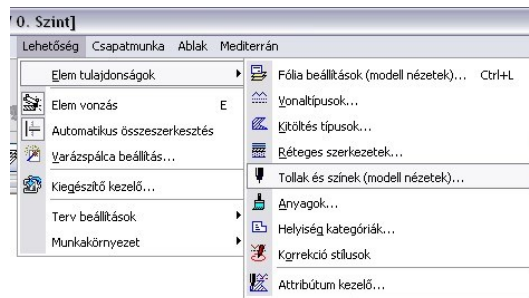
Drawing appears in the wrong colors.

The drawings are aligned with the color palette of Archicad 8.1 and 9, so some colors are displayed incorrectly in Archicad 10.

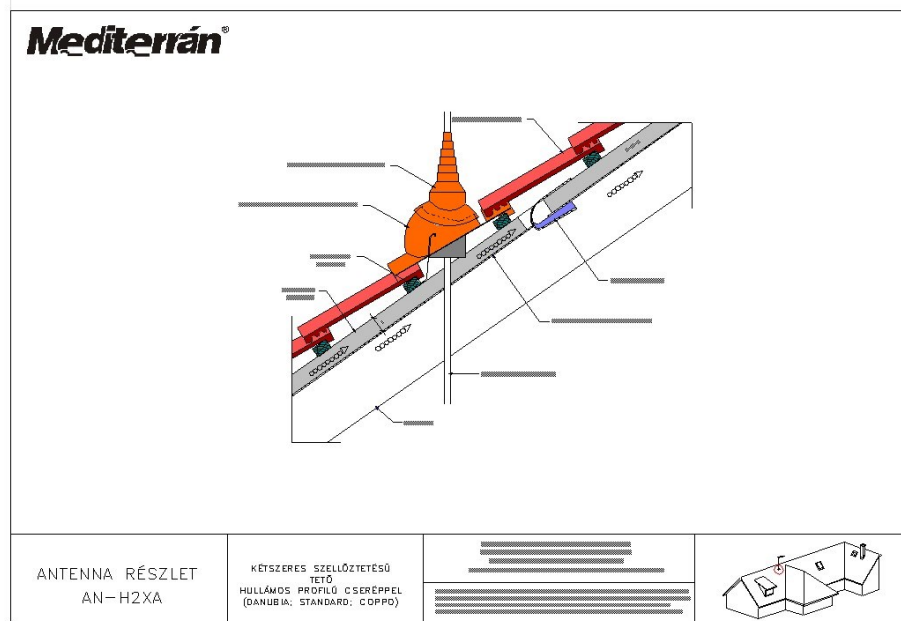


The solution:

1. change the color palette to the color palette of ArchiCAD by selecting the pen options "Archicad XX" under "options / element properties / pens and colors".



1. Change the following feather colors as desired:
 - 100 – black (contour pens)
 - 93 - gray (wooden structure visible surface)
 - 13 - red (tile looking surface)
 - 17 - burgundy (tile engravings)
 - 74 - brown (wooden structures)
 - 92 - gray (visible steel structures)
 - 44 - blue (flexible plastic parts)
 - 43 - dark blue (plastic parts)
 - 34 - blue (foil channel)
 - 3 - red (plastic roof elements)



5. chapter

5.1 Technical assistance and fault reporting

The Terran solution was made by ÉPTÁR Kft. If you have any bug reports or comments, please feel free to contact us at:

ÉPTÁR Kft.
1145 Budapest, Szugló utca 61-63.
Tel: 1 / 225 73 55
Fax: 1 / 225 73 56
e-mail: info@eptar.hu
Budapest, 2017. december 20.